

Data migration using Effio™

The key to a successful data migration is a controlled environment that can store your original data and the transformed data, ensuring adherence to data standards and rules throughout the transfer process.

Using Effio™ to transfer data enables you to effectively move, monitor and manage your critical business data.

Effio™ achieves this by storing data rules, quality checks based on those rules, providing feedback on areas that do not meet the transformation success criteria, and offering the means to update fields and correct errors.

Key Effio™ features for data migrations

- Hold original data in a time stamped data record
- Change log recording all modifications, logged by user account
- Embedded quality checks to ensure compliance with new standards
- Provision of destination data load templates
- Capability to cleanse and enrich data during transition activities
- Tracking of data point progress for automated progress reporting
- Automated change rules for transforming data to new formats on mass with speed and consistency

What is Effio™?

Effio™ is a cloud-based master data build and optimisation software capable of saving up to **50%** on time and cost efficiencies compared to traditional methods.

By seamlessly integrating with your existing ERP, CMMS and workflows, Effio™ provides a one stop solution for controlled, efficient, consistent, and connected deployment of your asset management strategy.



Challenges faced during data migrations

Data quality and management

- Assumption that the data is of high standard and completeness
- Many sources of original data
- Original data contains gaps and incorrect data
- Trust that the 'someone' has managed the data
- Conviction that processes are effective and are followed
- No clear ownership of the data

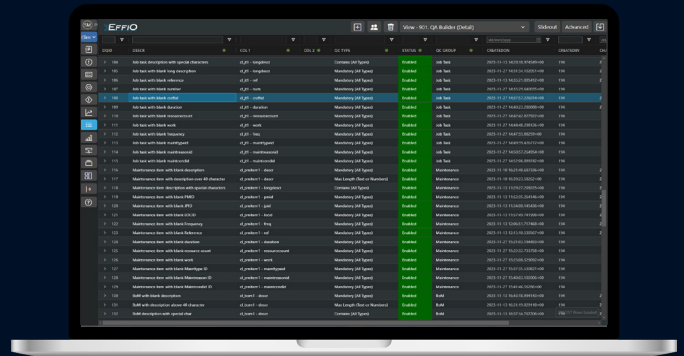
Accountability and resource restrictions

- Lack of budget and time to plan and risk assess the transition
- Wrong people accountable for the data transfer, often seen as only an IT task
- Absence of complete departmental representation early in the process
- Negative impact to the business if data transition is not a smooth one

Understanding, awareness and responsibility

- Lack of understanding of the data's importance to the business
- Departments unaware of the critical data they depend on
- Viewing data quality as 'not their job'
- Data quality absent from business KPI's

How Effio™ helps



Effio™ resolves these challenges by:

- **Providing the framework** for a controlled data transition process
- **Storing data standard and rules** for consistent application
- **Linking data** across departments
- **Providing an understanding of data** quality and gaps
- **Enabling gap closure** and progress monitoring
- **Offering secure and managed visibility** of data to users and transition team
- **Managing processes** with recorded sign-offs, logged changes, and auditable trails
- **Giving accessibility** to all stakeholders
- **Producing controlled** and automated load templates

Benefits



Provides control over a complex, business critical, multi-team activity which has a direct impact on operational effectiveness and time efficiency



Ensures the migration to new environment will deliver the anticipated improvements



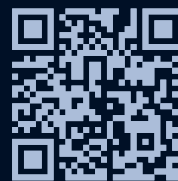
Enables teams to work to an agile project management methodology



Gives data custodians a place to hold data rules and stage gates for seamless movement of data from one project phase to the next

"Effio™ has a lot of helpful features, but one that makes it stand out is the degree of customisation that the user can impose in terms of visualising the data. This allowed us to save custom views, which made reviewing the data more intuitive and QA activities more efficient."

Maintenance Build Lead for an FPSO Operator



For more Effio™ use cases, scan the QR code

<https://abl-group.com/effio/>

